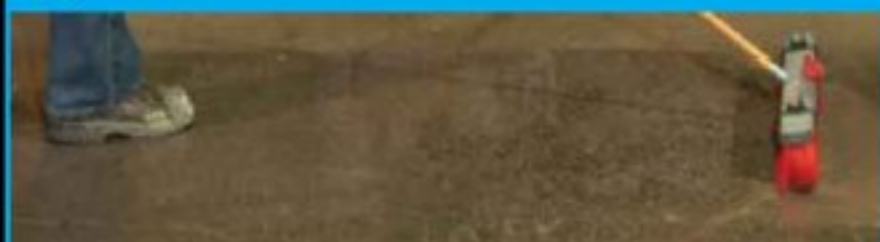


## SIMPLE 3 STEP APPLICATION!

### 1 FLOOR PREPARATION: ROCK SOLID SAFE ETCH



Etch the floor with Professional Etch Solution. Etching opens the pores of the concrete, allowing the coating to adhere to the sub straight.

### 2 MIX



Mix Rock Solid Polyurea Primer-Body coat part A & B

### 3 APPLY COATING



Roll On Rock Solid Polyurea Primer-Body Coat  
Apply Decorative Chip

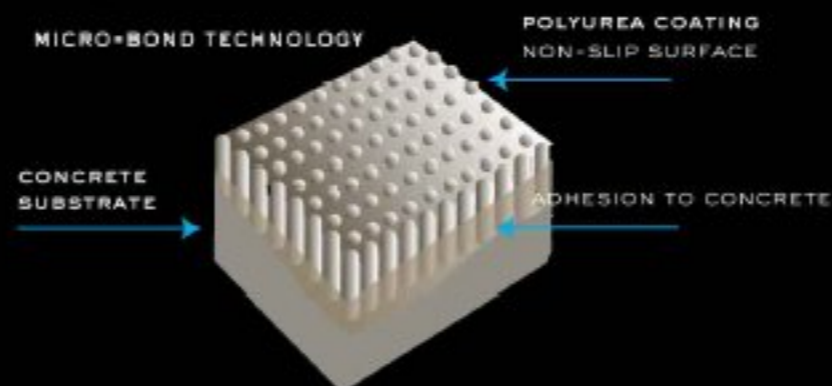
### 4 APPLY TOP COAT (OPTIONAL)



Apply optional Rock Solid Polyurea Top Coat.

## M I C R O - B O N D T E C H N O L O G Y

Rock Solid Floors Exclusive Micro-Bond Technology utilizes 40,000 micro hooks per sq. Inch ensuring an industry leading adhesion to the concrete. Micro-Bond Technology also creates a slip resistant surface, over an epoxy coating that are prone to be very slippery in wet or damp conditions.



## COLORS



saddle tan

denim

gun flint

domino

See our web site for additional color options and all your installation supplies.

**WARRANTY:** We offer an industry-leading 3-year warranty against delamination, and a 5-year warranty with the Rock Solid Floors top coat kit.

[www.elite-xpressions.com](http://www.elite-xpressions.com)

Toll Free: 866-556-6324

# ROCKSOLID FLOORS

Epoxy  
**FREE!**

THE WORLD'S FIRST

# ONE DAY

## DO-IT-YOURSELF

INDUSTRIAL GRADE POLYUREA  
FLOOR COATING SYSTEM

# ROCKSOLID FLOORS



## ROCK SOLID FLOORING SYSTEM COMES COMPLETE WITH

- Polyurea Primer-Body Coat Part "A"
- Polyurea Primer-Body Coat Part "B"
- 2 Decorative Chip (8 OZ Each)
- Professional Safe Etch Prep Solution
- Paint Stir Stick
- How To Instructional DVD
- \* EACH KIT COVERS 250 SQ.FT.

## OPTIONAL ITEMS



### Polyurea Top Coat Kit

The top coat provides additional protection and a high gloss finish - also increases warranty to 5 years!

### Rock Solid Floors Patch Kit

One and two quart kits are available.

### Installation Kits

One- and two-person installation kits are available.

THE WORLD'S FIRST

# ONE DAY DO-IT-YOURSELF INDUSTRIAL GRADE POLYUREA FLOOR COATING SYSTEM

Rock Solid Floors is an industrial grade system truly superior to that of any epoxy or urethane product available. Our patent pending Rock Solid System™ will allow you to finish your floor in hours, not days - able to handle foot traffic in just 6 to 8 hours and vehicle traffic within 48 hours. You get the kind of durability and speed that only Polyurea can offer.

## ECO SAFE

## ULTRA LOW VOCS & VIRTUALLY ODOR-FREE



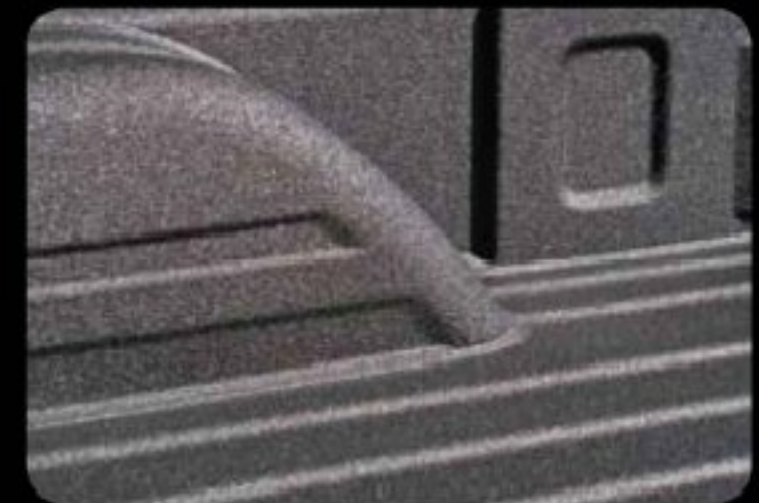
Rock Solid Floors' environmentally friendly Polyurea floor coatings are an ideal choice for indoor use.

Enhance the appearance of laundry rooms, basements, foyers, and other indoor areas while making these areas easier to maintain and clean.

## WHAT IS POLYUREA?

Polyurea is the latest advancement in coating technology providing the best of all worlds. Its extreme durability makes it 4x stronger than epoxy. It's chemically resistant to salt, oil, gas and other harsh chemicals. It's even 98% more flexible than epoxy, allowing for natural concrete movement - Polyurea will not crack or peel.

Polyurea has been utilized for over 25 years in industrial applications such as pipe / pipeline coatings and linings, water treatment plants, manhole & sewer linings, and automotive fascia OEM molded parts. In fact, if you are familiar with spray-on pickup truck bed liners, you are



familiar with Polyurea. Fast cure times, flexibility, and abrasion-resistance are all inherent properties of Polyurea, making it a natural choice for the high demands on an average garage floor.

# 4x

STRONGER THAN EPOXY

