



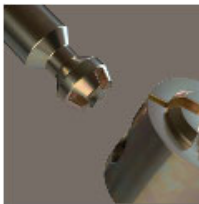
For Professional Builder durability, style and function for your garage, we introduce Ulti-MATE Garage PRO by BH North America - The Professional Builders Choice in Garage Cabinets now made available to non licensed professionals. This modern state of the art designed cabinet line incorporates Pro Builder features of high-end "Euro" styling, strength and the flexibility of modular design to transform garages into a organized functional room to work and or entertain.

Garage transformation is not just a growing fashion trend, but a lifestyle. Discerning customers looking for more than a kitchen cabinet "look" in the garage, we introduce – Ulti-MATE Garage PRO.

Ulti-MATE Garage PRO cabinet features:

- Unique Metallic Silver Polyurethane coated 3/4" MDF door and drawer fronts for added durability and smooth automotive like sheen
- Thermofused textured PVC laminate over high load rating 3/4" cabinet construction
- 1" moisture resistant shelves with dual shelf pins for high shelf load rating
- Full line bore inside cabinet for maximum adjustability of shelves
- Radius profile for a clean refined custom look
- 6" adjustable feet for uneven surfaces and easy floor cleaning
- High-end adjustable Euro hinges and Full extension pre-assembled drawer glides
- Oversized 20mm thick brushed Chrome handles for added contemporary styling
- High-end KD (knock down) assembly hardware with the New patented Slip Fit Technology for added strength and faster assembly

Color: Silver and Grey (not pictured – see below color swatch). Cabinets are pre-drilled and ready for assembly except for cabinet fronts - Drilling of Handle Holes Required - Printable Template Available.



Featuring the Exclusive **SLIP FIT** Fastener System.

- 30% faster assembly time, panels slip together with ease!
- Heavy duty cam and post system insures strong and secure fit.
- Stainless electroplates, tool hardened steel.



Long lasting and durable Polyurethane (PU) coated doors and drawer fronts for unique, high end automotive finish.



Heavy duty injection molded dual shelf pin brackets and 1" fully wrapped/edge banded high load rated shelves



Actual Cabinet Color (note handles not in Black)